

Operating manual

**MIWE myTC**

07.2013

**MIWE**

## IMPRESSUM

This document has been prepared with great care and checked to ensure that it corresponds to the software described. However, deviations, errors and translation errors cannot be completely ruled out. The publisher (MIWE Michael Wenz GmbH) can accept no legal responsibility or liability of any kind for mistakes in the content of these instructions and/or the consequences of such errors. We reserve the right to make technical and optical changes. All rights reserved. No part of this manual may be reproduced in any form (print, photocopy, microfilm or other), or processed, duplicated or distributed by means of electronic systems, without the prior written permission of the publisher (MIWE Michael Wenz GmbH). The same applies to the circulation of this instruction manual and the disclosure of its contents.

Copyright 2008 by:  
MIWE Michael Wenz GmbH  
P.O.Box 20, D-97448 Arnstein  
Phone +49-(0)9363-680  
Fax +49-(0)9363-688400  
e-mail [contact@miwe.de](mailto:contact@miwe.de)  
[www.miwe.com](http://www.miwe.com)

---

<b>1.</b>	<b>PURPOSE</b>	<b>3</b>
<hr/>		
<b>2.</b>	<b>INSTALLATION</b>	<b>3</b>
<hr/>		
2.1.	Requirements	3
2.1.1.	Hardware	3
2.1.2.	Software	3
2.2.	Installing MIWE myTC	3
<hr/>		
<b>3.</b>	<b>IMAGE PROCESSING WITH MIWE MYTC</b>	<b>4</b>
<hr/>		
3.1.	Starting the program	4
3.2.	Basic settings	4
3.3.	Requirements	4
3.4.	Creating product images	5
3.4.1.	Selecting a product image	5
3.4.2.	Changing the background	6
3.4.3.	Editing outlines	7
3.4.4.	Saving the product image	7
3.4.5.	Creating packages of product images	8
3.4.6.	Closing the program	8
3.5.	Creating advertising	9
3.5.1.	Selecting an advertising image	9
3.5.2.	Saving an advertising image	10
3.5.3.	Creating packages of advertising images	10
3.5.4.	Closing the program	10
<hr/>		
<b>4.</b>	<b>IMPORTING DATA TO TC CONTROLS</b>	<b>11</b>
<hr/>		
4.1.	Transferring data	11



## 1. Purpose

"MIWE myTC" software is used to create your own product images / advertising images.

This allows users to individualise the look of their MIWE TC controls.

## 2. Installation

### 2.1. Requirements

#### 2.1.1. Hardware

PC or laptop

- with a WINDOWS® XP, Windows® Vista or WINDOWS® 7 operating system.
- with a USB port.

#### 2.1.2. Software

##### Java

MIWE myTC requires Java Runtime Environment 7 or later.

Download from: <http://www.java.com/de/>

Installation: as per instructions

##### MIWE myTC

Download from: <http://www.miwe.de/Produkte/Steuerungstechnik/Software/>

Installation: see Installing "MIWE myTC"

### 2.2. Installing MIWE myTC



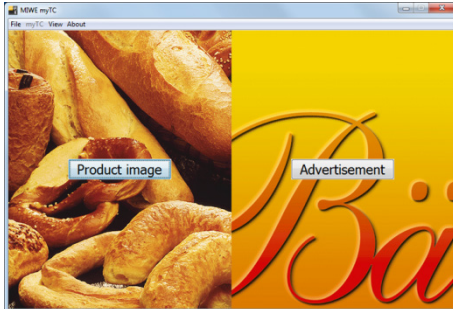
1. After downloading, double-click on: the "MIWE myTC.exe" file.
2. Select your installation language.
3. Follow the instructions in the installation wizard.

### 3. Image processing with MIWE myTC

#### 3.1. Starting the program

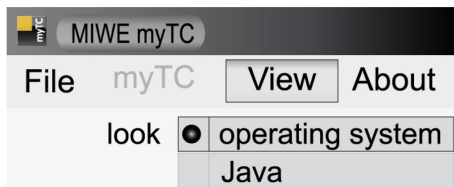


1. Double-click on the icon on the desktop.  
or
1. Open the program from the start menu.



A selection screen appears.

#### 3.2. Basic settings



1. Go to the "View" menu and open the submenu "Look and feel".
2. Select operating system or Java.

#### 3.3. Requirements

MIWE myTC can process JPEG, PNG, BMP, WBMP and GIF image files of any size.



##### NOTE!

Photos with sharp outlines are particularly good for editing/processing.

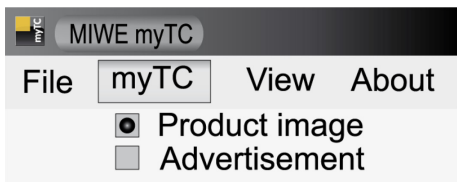
Images from your camera or scanner or from the Internet must first be saved on the hard drive in a folder of your choice.

### 3.4. Creating product images

#### 3.4.1. Selecting a product image



1. Select the PRODUCT IMAGE button on the selection screen.  
or

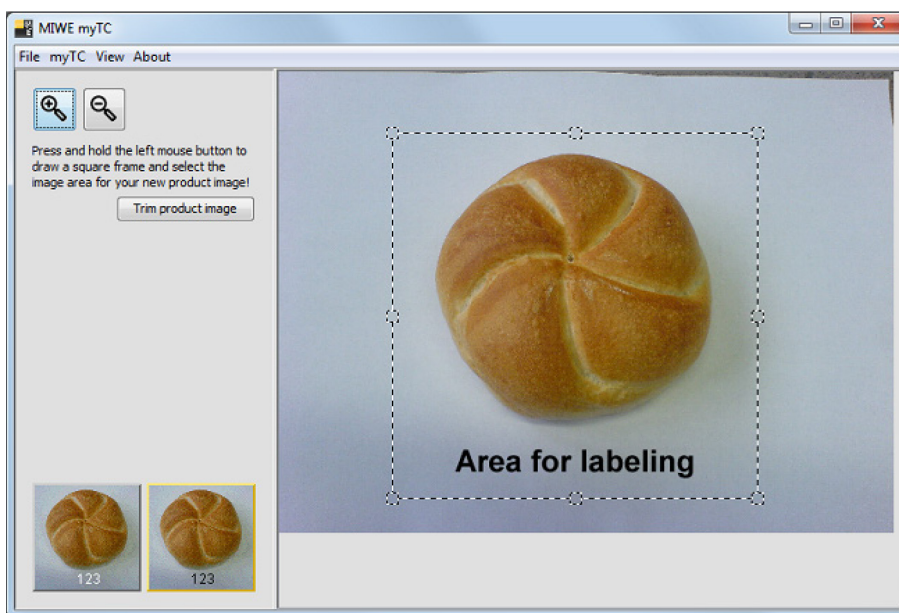


1. Select PRODUCT IMAGE from the "myTC" menu.

The product image wizard will appear on the left of the window.



2. With the OPEN IMAGE FILE button  
or
2. with "File > Open", select a photo for your product image.  
The "IMAGE PROCESSING" menu will appear.



#### IMAGE PROCESSING:

1. Hold the left mouse button to draw a frame around the product image.  
Adjust the corners, edges or centre of the frame if required.
2. Enlarge or reduce the product image using the zoom keys.



A preview of the button will appear in the "IMAGE PROCESSING" menu.  
The product image and label must not overlap.

3. Select the "CUT PRODUCT IMAGE" button once the detail selected is correct and to size.

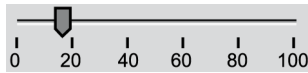
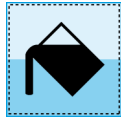
### 3.4.2. Changing the background

The background must be white to ensure a standard, consistent display of the product image.



#### NOTE!

The colour "white" is shown as transparent.



1. Select the FILL button.
2. Click on the image background with the crosshairs. The surrounding pixels will be coloured white.
3. You can set the sensitivity for each step with the slider.
  - 0: Only a few pixels turn white.
  - 100: Nearly all pixels turn white.

4. Use option menus to specify how the program is to colour the background white.

Adjacent pixel ▼

Brightness ▼

Each time you click on the background, it is compared with either the start pixel or the adjacent pixel.

The pixel properties compared depend on your selection:

- Brightness
- Colour
- Saturation

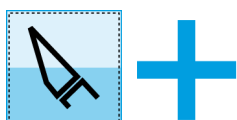
Undo a step with the BACK button.



Restore a step with the RESTORE button.



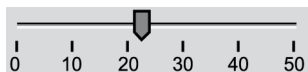
### 3.4.3. Editing outlines



1. Select the CUT button.
2. Using the crosshairs, carefully mark out the sections which are to be cut off.
3. Use the CLIP button to remove the section marked and colour the areas white.



4. Select the ROUND OFF button.  
The ROUND OFF button is used to smooth sharp edges and corners.



5. You can set the degree of rounding with the slider.



Undo a step with the BACK button.

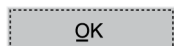


Restore a step with the RESTORE button.

### 3.4.4. Saving the product image



1. Select the SAVE button.  
or
1. Go to "File > Save".
2. Select the OK button.  
This saves the product image to the archive.



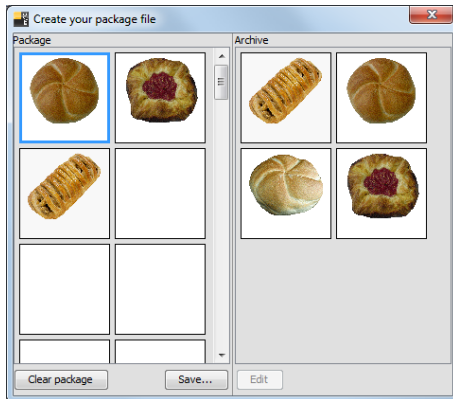
3. Select the OPEN IMAGE FILE... button to edit the next product image.

### 3.4.5. Creating packages of product images

You can create packages of product images from the archive for importing to the TC controls.



Create package file...



1. Use the CREATE PACKAGE button.  
or
1. Go to "File > New package".  
The "CREATE PACKAGE FILE" menu will open.
2. Hold the left mouse button to drag product images from the archive (on the right) to the package (on the left).  
or
2. Right-click > Copy > Paste.  
The "CREATE PACKAGE FILE" menu can be closed without saving by selecting the X button in the menu bar.

To delete:

- individual images using the DEL button (on the keypad)
- individual images with right-click > Delete
- a complete package with the CLEAR PACKAGE button

To post-edit images:

- select image from the archive and select the EDIT button.
  - right-click > Edit
3. Save the package with a file name and in the directory of your choice with SAVE....
  4. Save the file to a USB flash drive with at least 64 MB and no more than 4 GB of free memory.  
The data can now be transferred to the MIWE TC controls.



#### NOTE!

MIWE recommends that you save files straight to a MIWE USB flash drive.

### 3.4.6. Closing the program



1. Exit MIWE myTC by selecting the X button in the menu bar.  
or
1. With "File > End".

### 3.5. Creating advertising



**NOTE!**

The resolution of a file on the MIWE TC controls is 800x416 pixels.  
MIWE recommends starting out with images that are much larger in order to avoid blurry details.

#### 3.5.1. Selecting an advertising image



1. Select the ADVERTISING button on the selection screen.  
or



1. Select ADVERTISING from the "myTC" menu.

The advertising wizard will appear on the left of the window.



2. With the OPEN IMAGE FILE button  
or
2. with "File > Open", select a photo for your advertising image.  
The "IMAGE PROCESSING" menu will appear.



**IMAGE PROCESSING:**

1. Hold the left mouse button to draw a frame around the advertising image.  
Adjust the corners, edges or centre of the frame if required.
2. Enlarge or reduce the advertising image using the zoom keys.
3. The PREVIEW button shows you how the advertising image will look on the display.

### 3.5.2. Saving an advertising image



Cut and Save advertisement



OK

Open file...

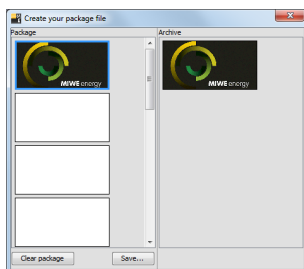
1. Select the CUT AND SAVE ADVERTISEMENT button.  
or
1. With "File > Save".
2. Select the OK button.  
This saves the advertising image to the archive.
3. Select the OPEN IMAGE FILE... button to edit the next advertising image.

### 3.5.3. Creating packages of advertising images

You can create packages of advertising images from the archive for importing to the TC controls.



Create package file...



1. Use the CREATE PACKAGE button.  
or
  1. Go to "File > New package".  
The "CREATE PACKAGE FILE" menu will open.
  2. Hold the left mouse button to drag advertising images from the archive (on the right) to the package (on the left).  
or
  2. Right-click > Copy > Paste.  
The "CREATE PACKAGE FILE" menu can be closed without saving by selecting the X button in the menu bar.
- To delete:
- individual images using the DEL button (on the keypad)
  - individual images with right-click > Delete
  - a complete package with the CLEAR PACKAGE button
3. Save the package with a file name and in the directory of your choice with SAVE....
  4. Save the file to a USB flash drive with at least 64 MB and no more than 4 GB of free memory.  
The data can now be transferred to the MIWE TC controls.



#### NOTE!

MIWE recommends that you save files straight to a MIWE USB flash drive.

### 3.5.4. Closing the program



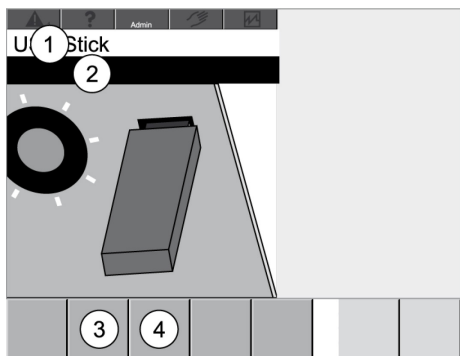
1. Exit MIWE myTC by selecting the X button in the menu bar.  
or
1. With "File > End".

## 4. Importing data to TC controls

### 4.1. Transferring data



1. Insert a USB flash drive with free memory of at least 64 MB and no more than 4GB into the USB port in the front of the controls.  
The USB FLASH DRIVE menu will appear.



- ① USB FLASH DRIVE menu display.
- ② IMPORT DATA submenu display.
- ③ READ PRODUCT IMAGES FROM FLASH DRIVE button.
- ④ READ ADVERTISING FROM FLASH DRIVE button.

2. Import product images or advertising images to the controls.



**NOTE!**

For further information, please see the operating instructions for Ovens with TC Controls , "Importing data to controls".